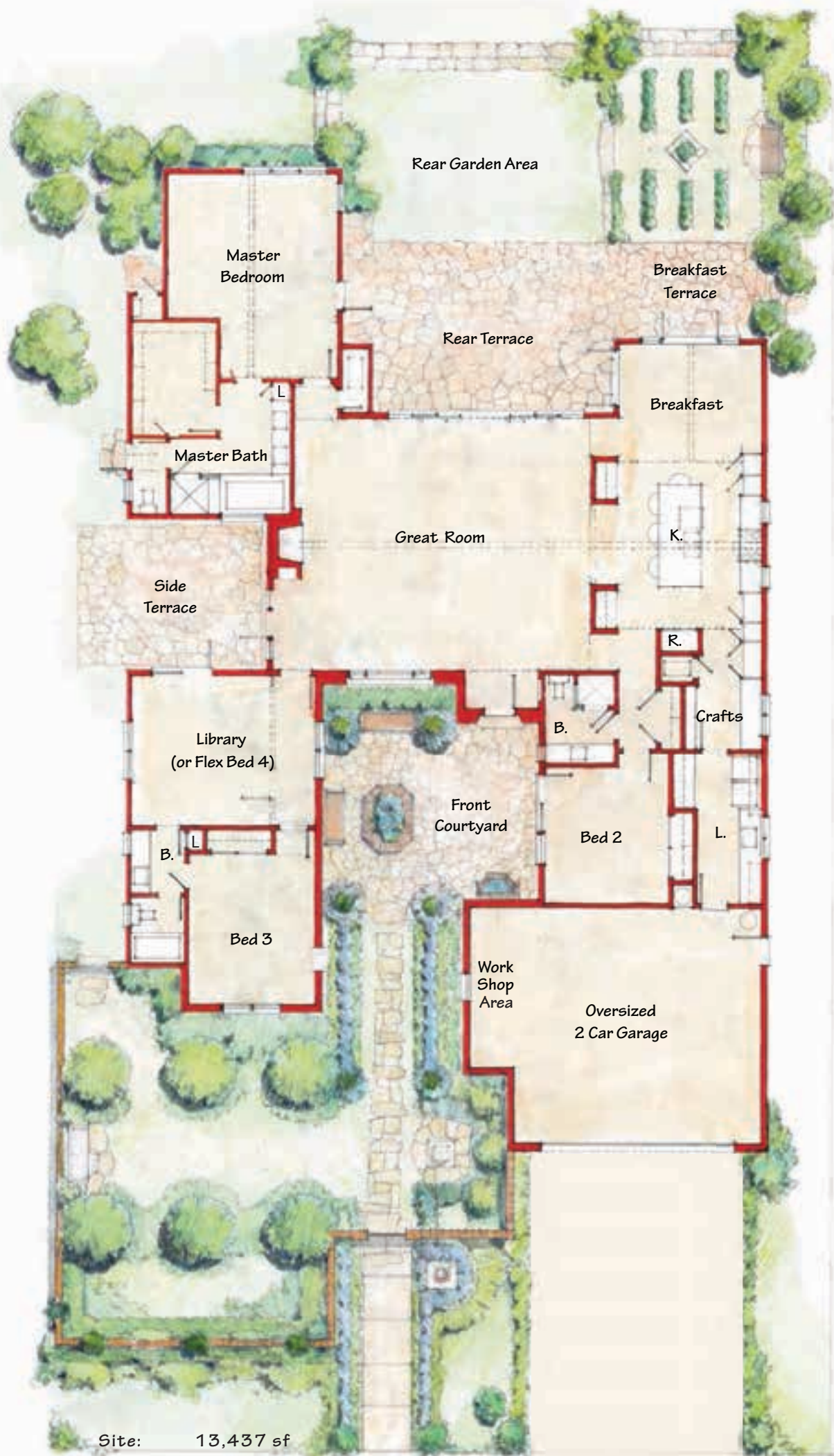


Architectural Features

- Bookshelves by the fireplace
- Flexible plan for your changing lifestyle with pre-designed flexible spaces at:
 - Bedroom 2 (to art studio, home office, caretaker residence)
 - Bedroom 3 pre-framed for future exterior door
 - Library (to 4th Bedroom, guest or living room for Bedroom 3)
 - Breakfast (to formal dining)
 - Workshop or potting area with media outlets at garage
- Double and single chrome pole closet storage at bedroom closets
- Energy efficient "sealed" gas fireplace with formal precast surround and mantle
- Powder room/bath with Kohler demi-lav sink and Moen "Eva" satin nickel high arc faucet and lever handles
- Exterior doors for home office or guests at bed 2 and library
- Living room flows to the rear terrace through large "Hawaiian-like" Fleetwood glass doors
- "Cat's paw" old world drywall finish with baby bullnose corners on interior walls
- Large breakfast/sun room with multiple sun walls, French doors and patio
- Fire sprinklers
- 8' high doors at most openings

Energy Saving/Low Maintenance Features

- Low E glass at select windows and doors for increased energy savings
- Electric car charger ready location in garage
- Fluorescent exterior decorative wall lights
- (2) Trane high efficiency furnaces with fan function including pre-design and partial pre-wire and plumbing for future air conditioning
- Pre-wired for future security in key locations. Data and telephone hub provided for easy networking. Data, telephone and cable wiring provided at TV locations. Key walls prepared for flat screen wiring.
- Energy efficient and aesthetically pleasing lighting blending fluorescent, LED and incandescent fixtures with energy saving vacancy sensors and dimmer switches at select locations
- Garage with extra task lighting, extra electrical outlets, separate electrical circuit, automatic roll-up fully insulated (quieter and more energy efficient) garage door and Liftmaster belt driven opener (programmable from your cell phone!)
- Two water heaters:
 - 1) 50 gallon water heater with water heater pan and recirculating hot water pump
 - 2) Tankless water heater with recirculating water pump
- Extra wall insulation for sound reduction at key interior walls (powder room, master bedroom, laundry, bath 3, FAU closets)
- Numerous French doors and side lites for natural light throughout the day
- Landscape irrigation timer for water savings
- USB charger receptacles and floor electrical receptacles at key locations
- Extra quiet 80 CFM Panasonic fans with humidity and motion sensors
- Photo cells for select exterior front lights
- Infrared or manual dimmer switch with remote at master bedroom
- Prefinished low maintenance gutters and downspouts in bronze finish, draining to underground drainage system
- Pre-design features for future solar panels



Site: 13,437 sf

RENDERED FLOOR PLAN

Living: 2,842 sf Garage: 606 sf



RENDERED STREET ELEVATION

- 8' tall Mahogany faced entry door with speak easy, decorative grill and Schlage door hardware
- Santa Barbara sandstone engineered veneer at select accent walls
- Pre-design and conduits for future yard lighting, solar panels and separate circuit spare dedicated for future spa
- Designer wood fencing with steel posts
- Front courtyard with privacy walls and custom wood gate
- Landscape architecture with entry trellis, fruit trees, gravel path, lawn, olive trees, raised cutting garden and flagstone stepping stones
- Exterior shower for after gardening, beach or dog rinse off
- Designer white cabinets with accent dark kitchen island cabinet
- Maple wood flooring at great room, library, master bedroom, breakfast, and kitchen
- Large outside patios on 3 sides of your home
- Engineered stone counter tops in "Cappuccino" color with "Chalk" accent top at kitchen island
- Custom mahogany faced "Carriage House" garage doors with accent clavos

For Sales Information

(805) 563-4054

Lorie F. Bartron

BRE 01005021

(805) 448-6350

Alexis Foth McCaw

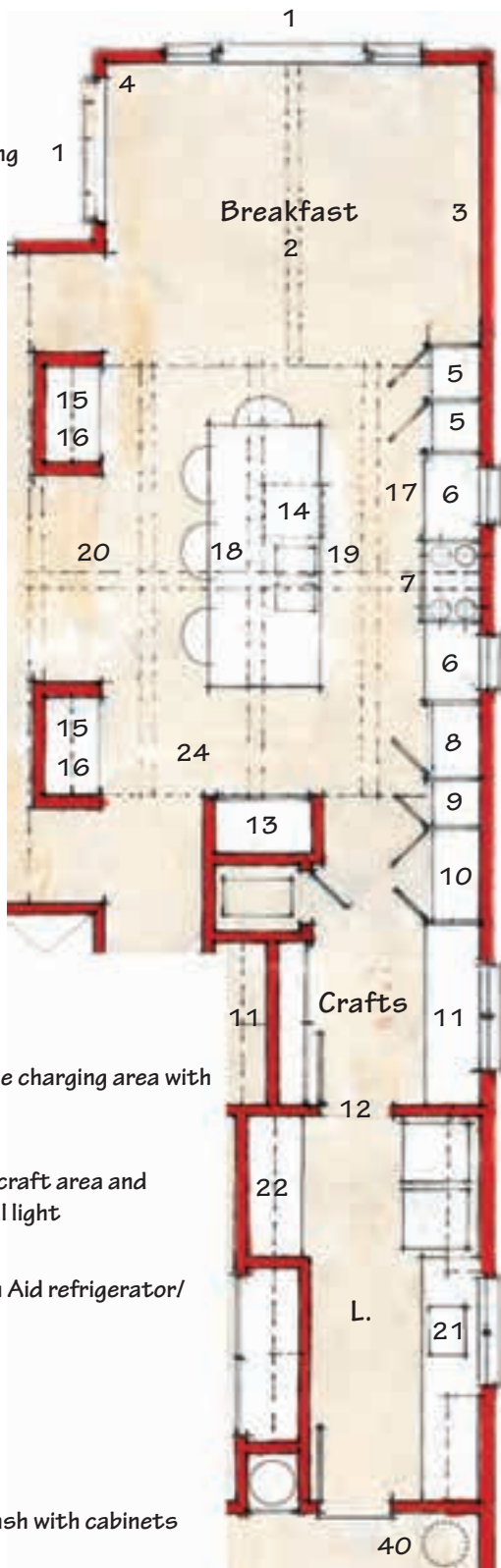
BRE 01839883

Berkshire Hathaway
HomeServices

3801 WHITE ROSE LANE SANTA BARBARA, CA 93110

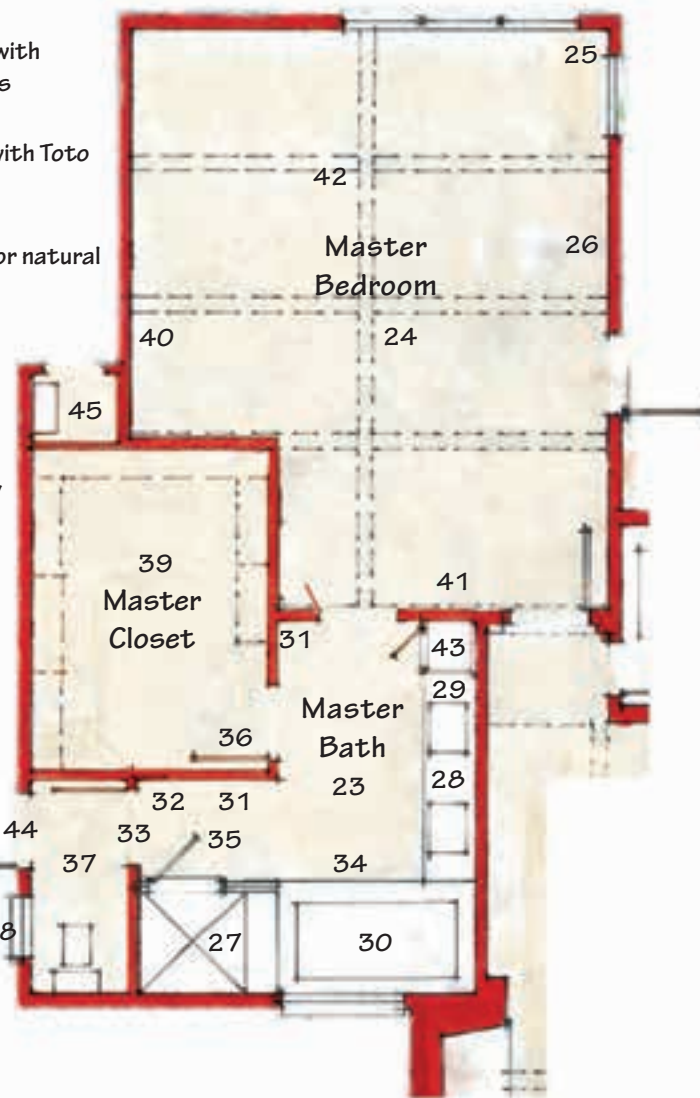
KITCHEN-KEY DESIGN FEATURES

1. Multiple French doors and sidelites for abundant light and ventilation
2. Vaulted breakfast and kitchen room ceiling with decorative wood beams
3. Future buffet or sofa wall
4. Pre-designed media wall
5. 8' tall china and glassware storage
6. Natural light and ventilation from large casement kitchen windows with quartz window sills
7. 36" Kitchen Aid professional sealed 6 burner gas range with 600 CFM fan above, pull out pot drawers below
8. Stainless steel microwave/convection oven with vertical tray storage above.
9. Kitchen Aid 30" electric ovens with vertical tray storage above and flat tray storage below
10. Double door pantry with pull out shelves
11. Craft desk, message center and cell phone charging area with craft storage wall or extra pantry space
12. Convenient mud room/laundry access to craft area and kitchen via white glass 8' door for natural light
13. 42" full stainless steel "built-in" Kitchen Aid refrigerator/freezer with ice maker
14. Miele Dishwasher
15. Under cabinet lighting
16. Butler counter top with custom backsplash with cabinets below with pull-out shelf
17. Built in trash containers for regular waste and recycling
18. Engineered stone slab counter tops with solid edge at oversized island with "L" shaped breakfast counter
19. Double extra deep stainless steel sink, insinkerator garbage disposal with air button island switch, and pull down Moen faucet pre-plumbed filtered water line to refrigerator
20. Architectural accent soffits and high dramatic beamed ceilings with low voltage can lights on dimmers for energy savings and designer pendant lights
21. Kohler extra deep laundry sink with window above
22. Folding counter and storage cabinets



MASTER SUITE-KEY DESIGN FEATURES

23. Ceramic tile flooring
24. Hardwood flooring at the entry, great room, kitchen, breakfast library and master bedroom
25. Cross ventilation and natural light from windows and door on two walls
26. Pre-designed media wall
27. Master shower with seat, floor to ceiling tile walls, shampoo and soap niche shelf and frameless shower door enclosure with satin nickel hinges
28. Engineered stone slab counter top, Kohler sinks, Moen satin nickel wide spread dual lever faucets, custom wood cabinets with extra drawers, drawer pulls, and extra deep makeup/shampoo drawers
29. Hard-wired Kimball & Young magnifying wall mounted makeup mirror
30. Kohler cast iron drop in tub with satin finish handles on engineered stone tub deck with deck mounted faucet lit by adjoining openable window and recessed can lights above
31. Towel bars in satin nickel in two locations
32. Satin nickel robe hooks
33. French door with white translucent glass
34. Bath tile floors, tub face and tub splash
35. Recessed can lights on motion sensor switching for energy savings and low voltage lights and dimmer
36. Master closet door with mirrors on both sides
37. Private toilet room with Toto toilet
38. Toilet room window for natural ventilation and light
39. Single and double chrome pole and shelf storage
40. Prewired for security panel or emergency response
41. Extra insulation at master bedroom interior wall
42. High elegant vaulted ceiling with beams
43. Linen storage
44. Exterior French door for yard access
45. Tankless water heater with recirculating pump



THE CAREY GROUP STORY

www.careygroupinc.com

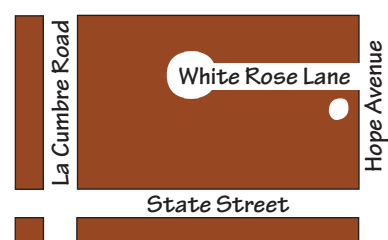
Creating homes in Santa Barbara for over 35 years, The Carey Group, Inc. holds professional licenses in architecture, construction and real estate. Homebuyers expect well thought out, convenient, attractive homes and we strive to deliver a product that exceeds these expectations. The extra measure of balancing aesthetics, maintenance and cost, distinguishes our homes from all others.

The Carey Group values original ideas, warm hearts, family values, and above all producing exceptional homes. We love what we do, from the day we start the design process through to seeing our buyers decorate their new homes for the holidays. Once you have lived in a Carey Group home, we think you will understand why we have a proud record of establishing and sustaining long term relationships with our buyers.

3801 WHITE ROSE LANE SANTA BARBARA, CA 93110

Continuing a tradition of constant research and development, the seller, SB93110, Inc. reserves the right to change price, design and specifications without prior notice or obligation. Square footages are approximations only. Size, location of windows, finished front entries, and other features vary per elevation and home site location. The above renderings are illustrative only and may not reflect what was actually constructed, ask your sales representative what features are included in your home.

Close to nearby shops, restaurants and...



- La Cumbre Plaza
- 5 Points Shopping Center
- YMCA
- Starbucks
- Petco
- Spectrum Gym
- Blenders in the Grass
- Coffee Bean & Tea Leaf
- Vons
- Albertsons
- Gelsons
- Whole Foods
- Fresco
- Jeanines
- Via Maestra 42
- Neighborhood banks
- Chuck's Steak House
- CVS Drugstore
- Kinkos
- And much, much more...

For Sales Information

(805) 563-4054
Lorie Bartron
BRE 01005021

(805) 448-6350
Alexis Foth McCaw
BRE 01839883